



US009244660B2

(12) **United States Patent**  
**Chauhan et al.**

(10) **Patent No.:** **US 9,244,660 B2**  
(45) **Date of Patent:** **Jan. 26, 2016**

- (54) **RESPONSIVE SELF-SERVICE WEBSITE TEMPLATE**
- (71) Applicant: **salesforce.com, inc.**, San Francisco, CA (US)
- (72) Inventors: **Chetanya Chauhan**, San Francisco, CA (US); **Michael Chou**, Los Altos, CA (US); **Joseph Shelby Hubick**, Vancouver (CA)
- (73) Assignee: **salesforce.com, inc.**, San Francisco, CA (US)
- (\*) Notice: Subject to any disclaimer, the term of this patent is extended or adjusted under 35 U.S.C. 154(b) by 0 days.

5,649,104 A	7/1997	Carleton et al.
5,715,450 A	2/1998	Ambrose et al.
5,761,419 A	6/1998	Schwartz et al.
5,819,038 A	10/1998	Carleton et al.
5,821,937 A	10/1998	Tonelli et al.
5,831,610 A	11/1998	Tonelli et al.
5,873,096 A	2/1999	Lim et al.
5,918,159 A	6/1999	Fomukong et al.
5,963,953 A	10/1999	Cram et al.
6,092,083 A	7/2000	Brodersen et al.
6,161,149 A	12/2000	Achacoso et al.
6,169,534 B1	1/2001	Raffel et al.
6,178,425 B1	1/2001	Brodersen et al.
6,189,011 B1	2/2001	Lim et al.
6,216,135 B1	4/2001	Brodersen et al.
6,233,617 B1	5/2001	Rothwein et al.
6,266,669 B1	7/2001	Brodersen et al.
6,295,530 B1	9/2001	Ritchie et al.
6,324,568 B1	11/2001	Diec
6,324,693 B1	11/2001	Brodersen et al.

(Continued)

(21) Appl. No.: **14/459,246**

(22) Filed: **Aug. 13, 2014**

#### OTHER PUBLICATIONS

(65) **Prior Publication Data**  
US 2015/0052498 A1 Feb. 19, 2015

“Aura Open Source Developer’s Guide, version 31.0: Summer 2014”, salesforce.com, last updated Jun. 2, 2014, 220 pages.

(Continued)

#### Related U.S. Application Data

(60) Provisional application No. 61/865,284, filed on Aug. 13, 2013.

*Primary Examiner* — Chameli Das

(74) *Attorney, Agent, or Firm* — Haynes Beffel & Wolfeld LLP; Ernest J. Beffel, Jr.

(51) **Int. Cl.**  
**G06F 9/44** (2006.01)

(52) **U.S. Cl.**  
CPC ..... **G06F 8/38** (2013.01)

(58) **Field of Classification Search**  
USPC ..... 717/109  
See application file for complete search history.

(57) **ABSTRACT**

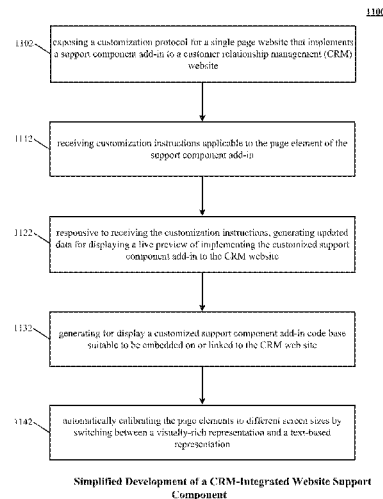
The technology disclosed relates to a self-service customization protocol for a single page website that implements a support component add-in to the CRM website. The self-service customization protocol includes a plurality of page elements that can be easily edited by the customers without any coding.

(56) **References Cited**

#### U.S. PATENT DOCUMENTS

5,577,188 A 11/1996 Zhu  
5,608,872 A 3/1997 Schwartz et al.

**18 Claims, 13 Drawing Sheets**



(56)

## References Cited

## U.S. PATENT DOCUMENTS

6,336,137	B1	1/2002	Lee et al.	8,566,301	B2	10/2013	Rueben et al.	
D454,139	S	3/2002	Feldcamp	8,646,103	B2	2/2014	Jakobson et al.	
6,367,077	B1	4/2002	Brodersen et al.	8,756,275	B2	6/2014	Jakobson	
6,393,605	B1	5/2002	Loomans	8,769,004	B2	7/2014	Jakobson	
6,405,220	B1	6/2002	Brodersen et al.	8,769,017	B2	7/2014	Jakobson	
6,434,550	B1	8/2002	Warner et al.	8,849,693	B1 *	9/2014	Koyfman	G06Q 90/00 705/14.1
6,446,089	B1	9/2002	Brodersen et al.	2001/0044791	A1	11/2001	Richter et al.	
6,535,909	B1	3/2003	Rust	2002/0072951	A1	6/2002	Lee et al.	
6,549,908	B1	4/2003	Loomans	2002/0082892	A1	6/2002	Raffel et al.	
6,553,563	B2	4/2003	Ambrose et al.	2002/0129352	A1	9/2002	Brodersen et al.	
6,560,461	B1	5/2003	Fomukong et al.	2002/0140731	A1	10/2002	Subramaniam et al.	
6,574,635	B2	6/2003	Stauber et al.	2002/0143997	A1	10/2002	Huang et al.	
6,577,726	B1	6/2003	Huang et al.	2002/0162090	A1	10/2002	Parnell et al.	
6,601,087	B1	7/2003	Zhu et al.	2002/0165742	A1	11/2002	Robins	
6,604,117	B2	8/2003	Lim et al.	2003/0004971	A1	1/2003	Gong et al.	
6,604,128	B2	8/2003	Diec	2003/0018705	A1	1/2003	Chen et al.	
6,609,150	B2	8/2003	Lee et al.	2003/0018830	A1	1/2003	Chen et al.	
6,621,834	B1	9/2003	Scherpbier et al.	2003/0066031	A1	4/2003	Laane	
6,654,032	B1	11/2003	Zhu et al.	2003/0066032	A1	4/2003	Ramachandran et al.	
6,665,648	B2	12/2003	Brodersen et al.	2003/0069936	A1	4/2003	Warner et al.	
6,665,655	B1	12/2003	Warner et al.	2003/0070000	A1	4/2003	Coker et al.	
6,684,438	B2	2/2004	Brodersen et al.	2003/0070004	A1	4/2003	Mukundan et al.	
6,711,565	B1	3/2004	Subramaniam et al.	2003/0070005	A1	4/2003	Mukundan et al.	
6,724,399	B1	4/2004	Katchour et al.	2003/0074418	A1	4/2003	Coker	
6,728,702	B1	4/2004	Subramaniam et al.	2003/0120675	A1	6/2003	Stauber et al.	
6,728,960	B1	4/2004	Loomans	2003/0151633	A1	8/2003	George et al.	
6,732,095	B1	5/2004	Warshavsky et al.	2003/0159136	A1	8/2003	Huang et al.	
6,732,100	B1	5/2004	Brodersen et al.	2003/0187921	A1	10/2003	Diec	
6,732,111	B2	5/2004	Brodersen et al.	2003/0189600	A1	10/2003	Gune et al.	
6,754,681	B2	6/2004	Brodersen et al.	2003/0204427	A1	10/2003	Gune et al.	
6,763,351	B1	7/2004	Subramaniam et al.	2003/0206192	A1	11/2003	Chen et al.	
6,763,501	B1	7/2004	Zhu et al.	2003/0225730	A1	12/2003	Warner et al.	
6,768,904	B2	7/2004	Kim	2004/0001092	A1	1/2004	Rothwein et al.	
6,772,229	B1	8/2004	Achacoso et al.	2004/0010489	A1	1/2004	Rio	
6,782,383	B2	8/2004	Subramaniam et al.	2004/0015981	A1	1/2004	Coker et al.	
6,804,330	B1	10/2004	Jones et al.	2004/0027388	A1	2/2004	Berg et al.	
6,826,565	B2	11/2004	Ritchie et al.	2004/0107125	A1 *	6/2004	Guheen et al.	705/7
6,826,582	B1	11/2004	Chatterjee et al.	2004/0128001	A1	7/2004	Levin et al.	
6,826,745	B2	11/2004	Coker et al.	2004/0186860	A1	9/2004	Lee et al.	
6,829,655	B1	12/2004	Huang et al.	2004/0193510	A1	9/2004	Catahan et al.	
6,842,748	B1	1/2005	Warner et al.	2004/0199489	A1	10/2004	Barnes-Leon et al.	
6,850,895	B2	2/2005	Brodersen et al.	2004/0199536	A1	10/2004	Barnes Leon et al.	
6,850,949	B2	2/2005	Warner et al.	2004/0199543	A1	10/2004	Braud et al.	
7,062,502	B1	6/2006	Kesler	2004/0249854	A1	12/2004	Barnes-Leon et al.	
7,069,231	B1	6/2006	Cinarkaya et al.	2004/0260534	A1	12/2004	Pak et al.	
7,069,497	B1	6/2006	Desai	2004/0260659	A1	12/2004	Chan et al.	
7,181,758	B1	2/2007	Chan	2004/0268299	A1	12/2004	Lei et al.	
7,289,976	B2	10/2007	Kihneman et al.	2005/0050555	A1	3/2005	Exley et al.	
7,340,411	B2	3/2008	Cook	2005/0091098	A1	4/2005	Brodersen et al.	
7,356,482	B2	4/2008	Frankland et al.	2005/0188349	A1 *	8/2005	Bent	G06F 8/38 717/106
7,401,094	B1	7/2008	Kesler	2006/0021019	A1	1/2006	Hinton et al.	
7,412,455	B2	8/2008	Dillon	2006/0178918	A1 *	8/2006	Mikurak	705/7
7,508,789	B2	3/2009	Chan	2007/0067711	A1 *	3/2007	Woodall	G06F 17/30967 715/207
7,603,483	B2	10/2009	Psounis et al.	2007/0094608	A1 *	4/2007	Getsch	G06F 9/4443 715/762
7,620,655	B2	11/2009	Larsson et al.	2007/0124671	A1 *	5/2007	Hackworth	G06F 17/30587 715/210
7,698,160	B2	4/2010	Beaven et al.	2007/0244990	A1 *	10/2007	Wells	709/218
7,779,475	B2	8/2010	Jakobson et al.	2008/0249972	A1	10/2008	Dillon	
7,851,004	B2	12/2010	Hirao et al.	2009/0063415	A1	3/2009	Chatfield et al.	
8,014,943	B2	9/2011	Jakobson	2009/0100342	A1	4/2009	Jakobson	
8,015,495	B2	9/2011	Achacoso et al.	2009/0177744	A1	7/2009	Marlow et al.	
8,032,297	B2	10/2011	Jakobson	2011/0214067	A1 *	9/2011	Tanaka	G06F 17/243 715/745
8,073,850	B1	12/2011	Hubbard et al.	2011/0218958	A1	9/2011	Warshavsky et al.	
8,082,301	B2	12/2011	Ahlgren et al.	2011/0247051	A1	10/2011	Bulumulla et al.	
8,095,413	B1	1/2012	Beaven	2012/0042218	A1	2/2012	Cinarkaya et al.	
8,095,594	B2	1/2012	Beaven et al.	2012/0066378	A1 *	3/2012	Lui et al.	709/224
8,209,308	B2	6/2012	Rueben et al.	2012/0084638	A1 *	4/2012	Calvin et al.	715/234
8,209,333	B2	6/2012	Hubbard et al.	2012/0143817	A1 *	6/2012	Prabaker et al.	707/608
8,275,836	B2	9/2012	Beaven et al.	2012/0233137	A1	9/2012	Jakobson et al.	
8,457,545	B2	6/2013	Chan	2012/0290407	A1	11/2012	Hubbard et al.	
8,468,117	B1 *	6/2013	Chasman et al.	2013/0091204	A1 *	4/2013	Loh et al.	709/204
8,484,111	B2	7/2013	Frankland et al.	2013/0212497	A1	8/2013	Zelenko et al.	
8,490,025	B2	7/2013	Jakobson et al.					
8,504,945	B2	8/2013	Jakobson et al.					
8,510,045	B2	8/2013	Rueben et al.					
8,510,664	B2	8/2013	Rueben et al.					

(56)

**References Cited**

**OTHER PUBLICATIONS**

U.S. PATENT DOCUMENTS

2013/0247216 A1 9/2013 Cinarkaya et al.  
2013/0325726 A1\* 12/2013 Tuchman et al. .... 705/304  
2014/0075346 A1\* 3/2014 Cardno ..... G06F 9/4443  
715/762

“Community Template for Self-Service Implementation Guide (Beta)”, Salesforce.com: Summer ’14, last updated: Jun. 23, 2014, 55 pages.

\* cited by examiner

100

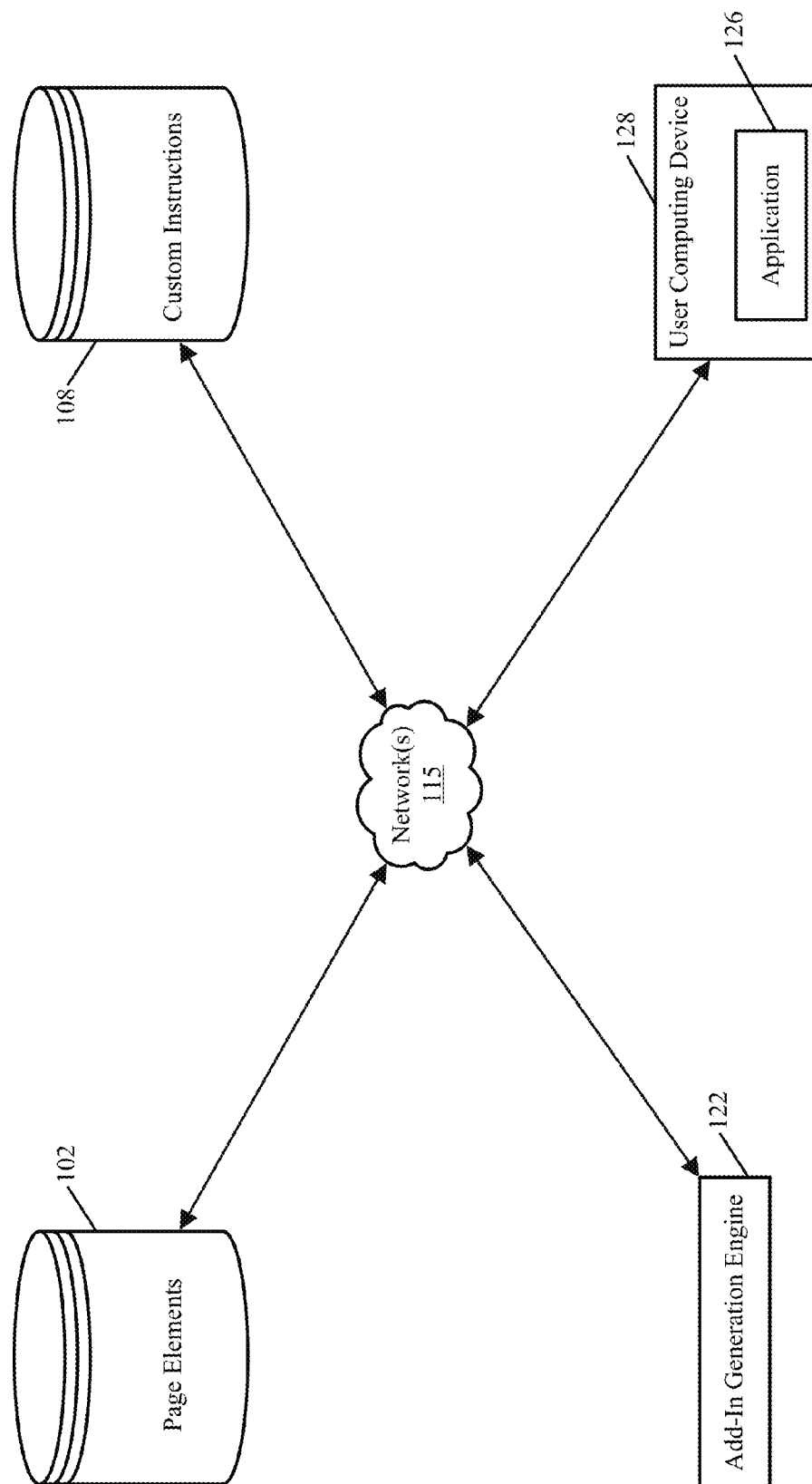


FIG. 1 – Servers, Clients, and Databases

200

COOKLY

215

What would you like to know?

222

ALL

THANKSGIVING

Turkey

STUFFING

GRAVY

SEAFOOD

Fish

SHELLFISH

ROE

MEAT

Poultry

PASTA

Baked

SALAD

Romaine

Categories

Images

Images

See More

FIG. 2 – Visually Rich Customization Protocol

300A

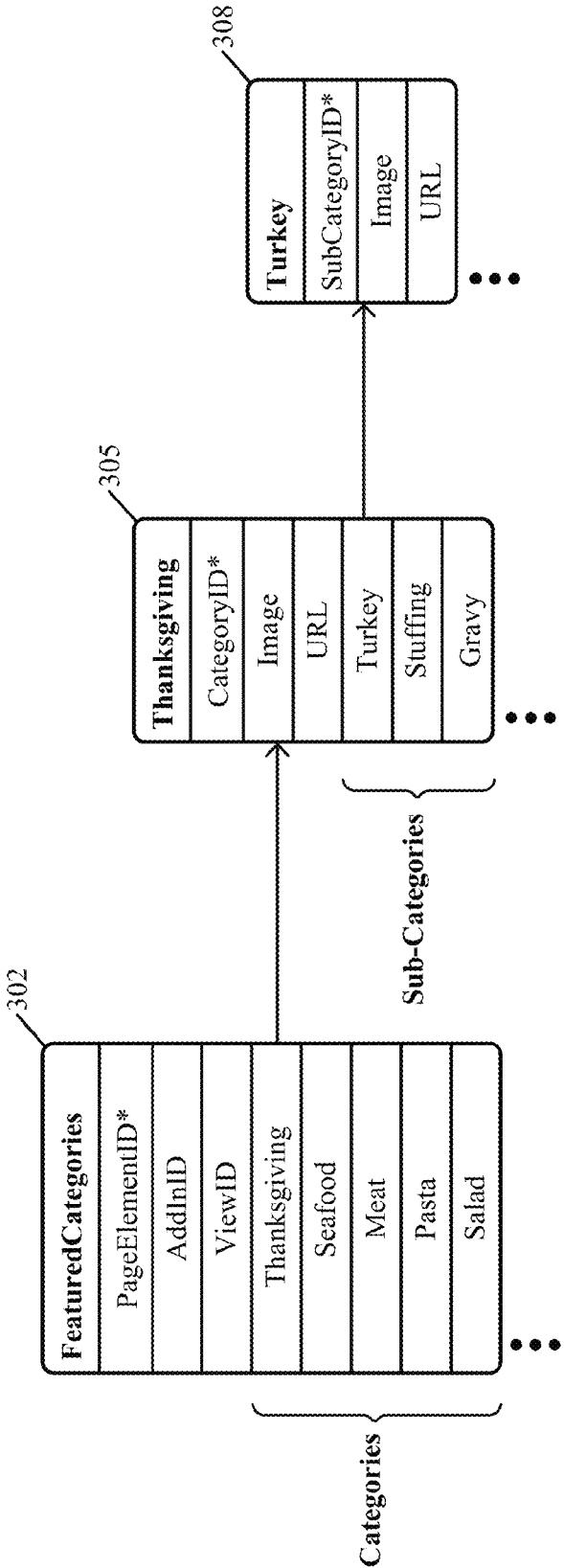


FIG. 3A – Featured Categories Schema

300B

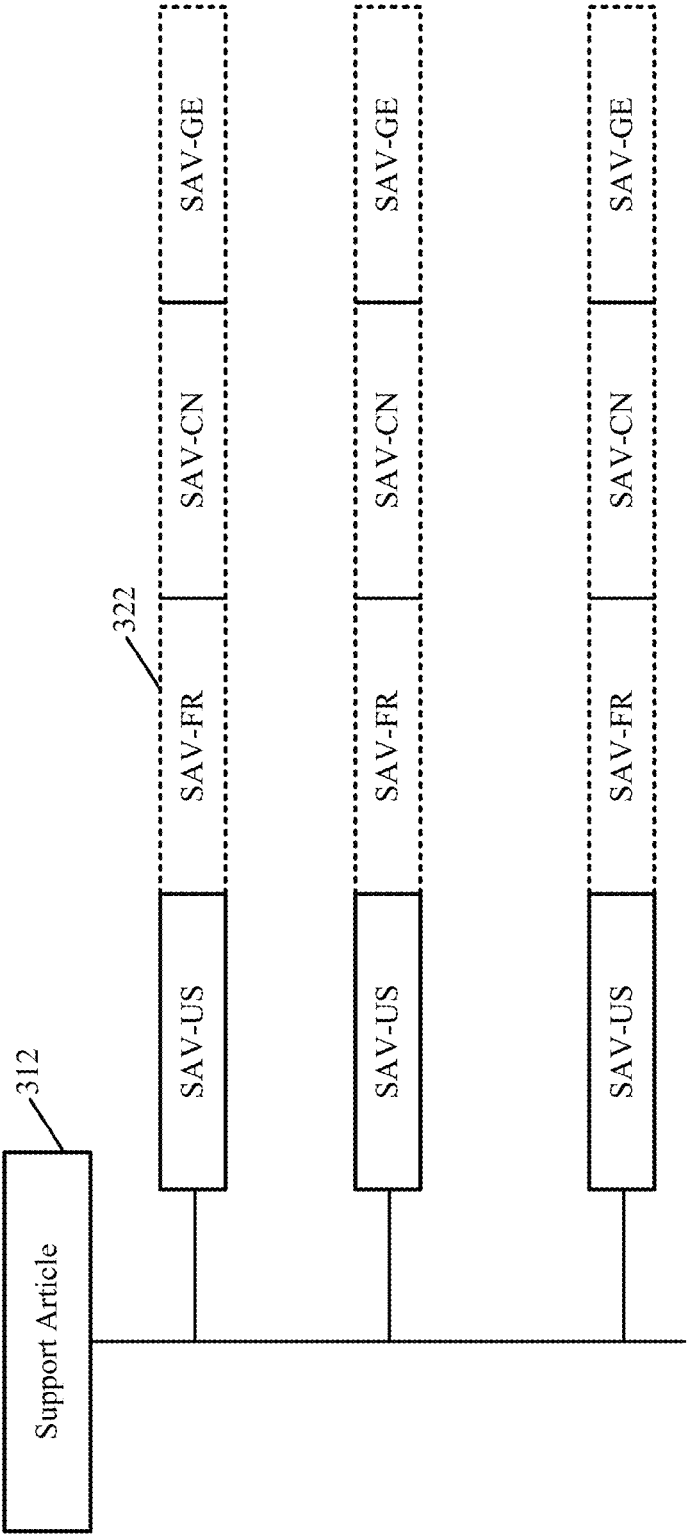


FIG. 3B – Support Article

400

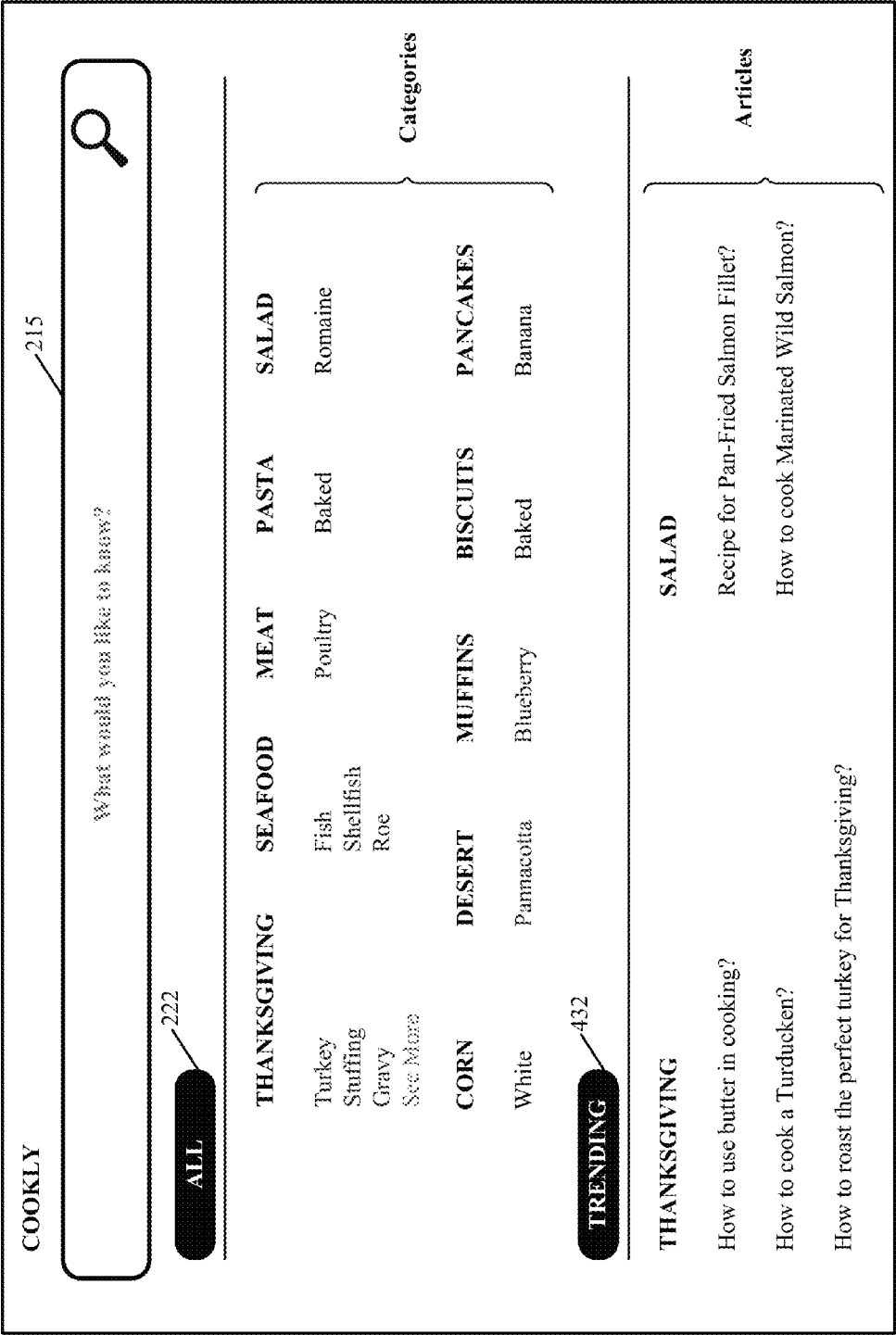


FIG. 4 – Text-Based Customization Profile



500

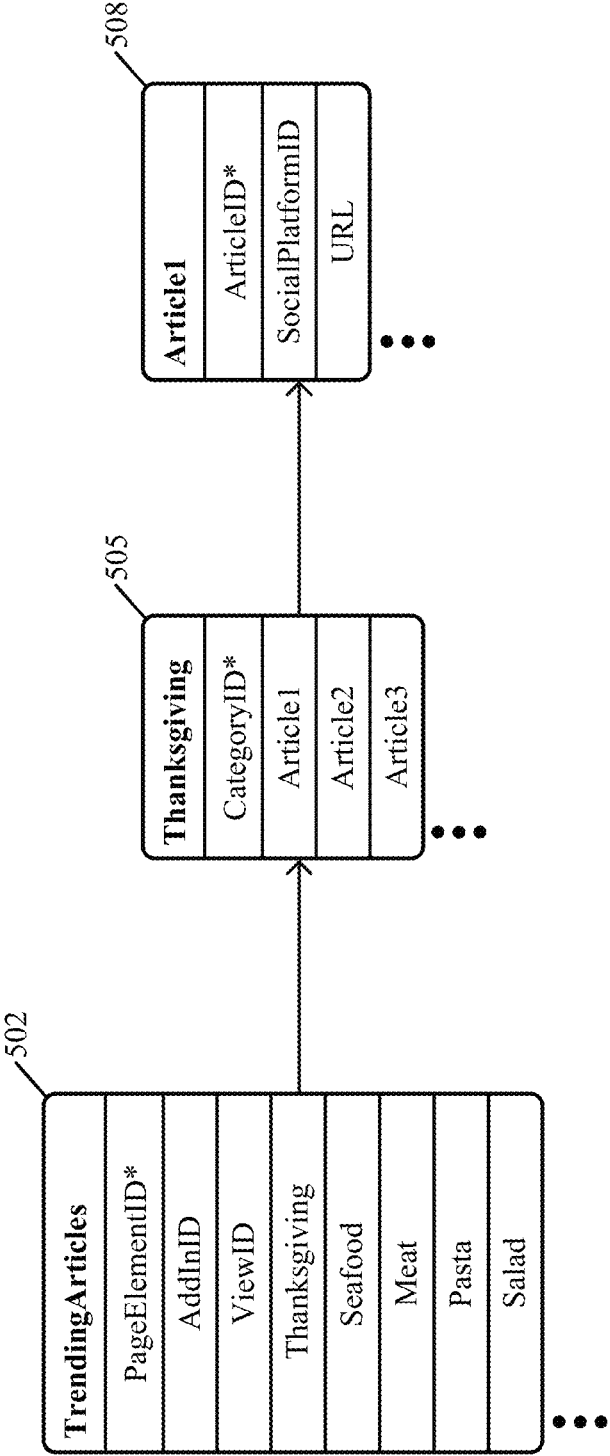


FIG. 5 – Trending Articles Schema

600

The interface is divided into two main sections: the **Editor Palette** on the left and the **Categories** section on the right.

**Editor Palette (602):**

- Self Service Header:** A section containing:
  - Header Background Color:** A color selection box.
  - Header Font Size:** A text input field.
  - Header Font Family:** A dropdown menu currently showing **'Open Sans', sans-serif**.
- Self Service Background Colors:** A section containing three color selection boxes for:
  - Close Case Button Background Color**
  - Hover Close Case Button Background Color**
  - Reopen Case Button Background Color**
- Buttons:** **Cancel** (black) and **Save** (grey) buttons are located at the bottom of the palette.

**Categories:**

- COOKLY:** A category label.
- Search:** A search bar (215) with the placeholder text "What would you like to know?" and a magnifying glass icon.
- ALL:** A black button (222) to view all items.
- Item List:** A list of items: **THANKSGIVING**, **SEAFOOD**, **MEAT**, **CORN**, **DESERT**, and **MUFFINS**.

FIG. 6 – Branding Editor

700

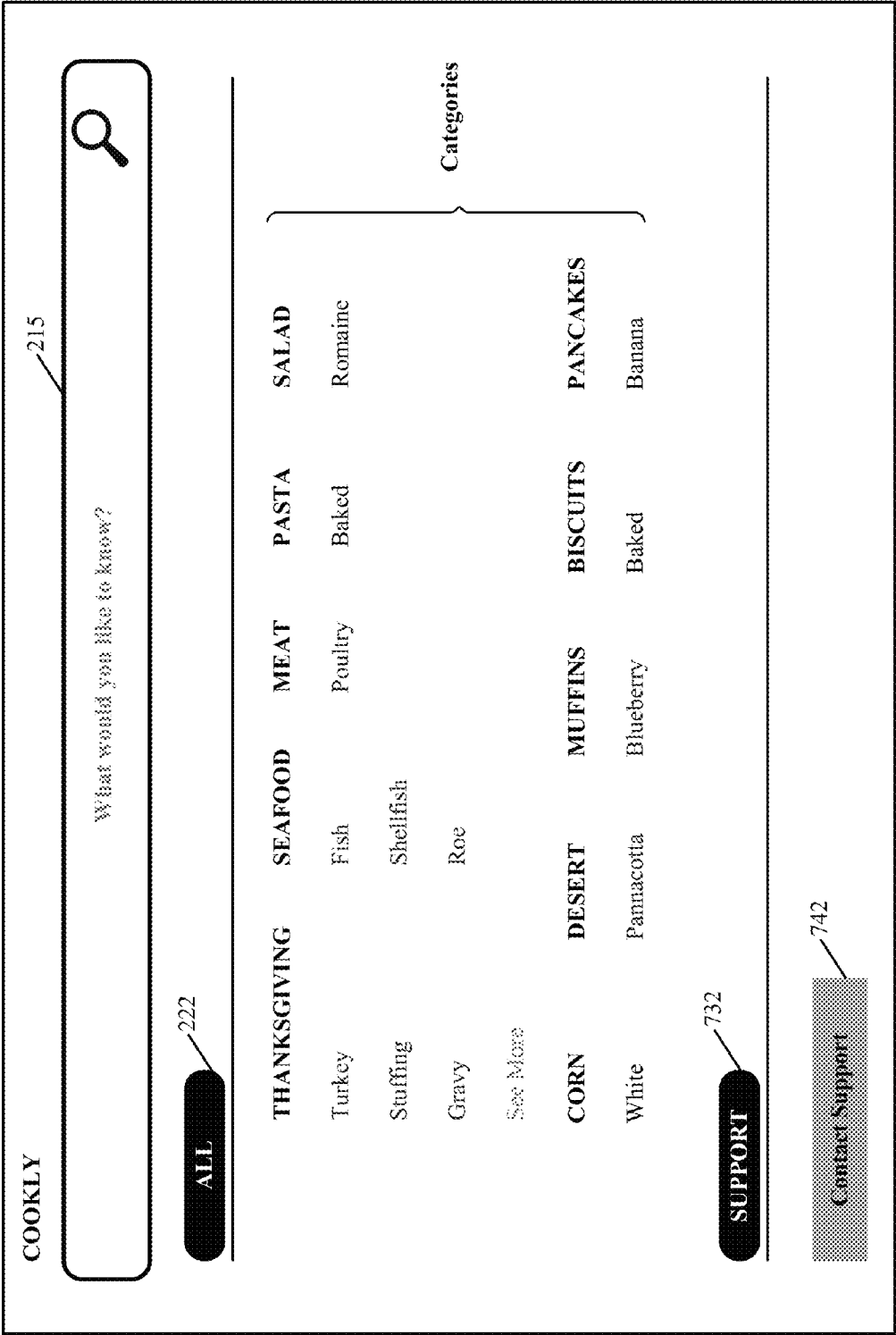


FIG. 7 – Case Submitter

800

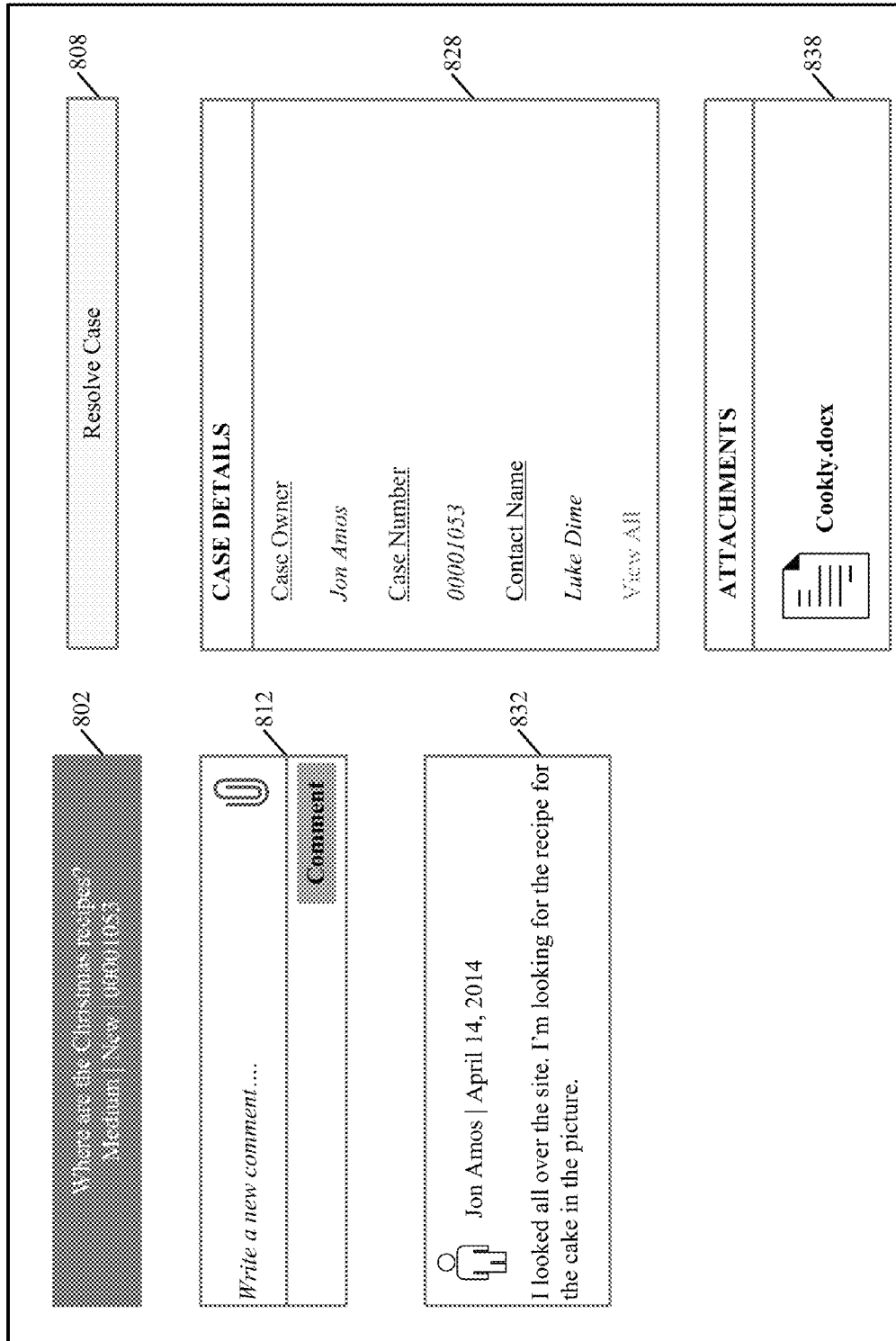


FIG. 8 – Sub-Elements of Case Submitter

900

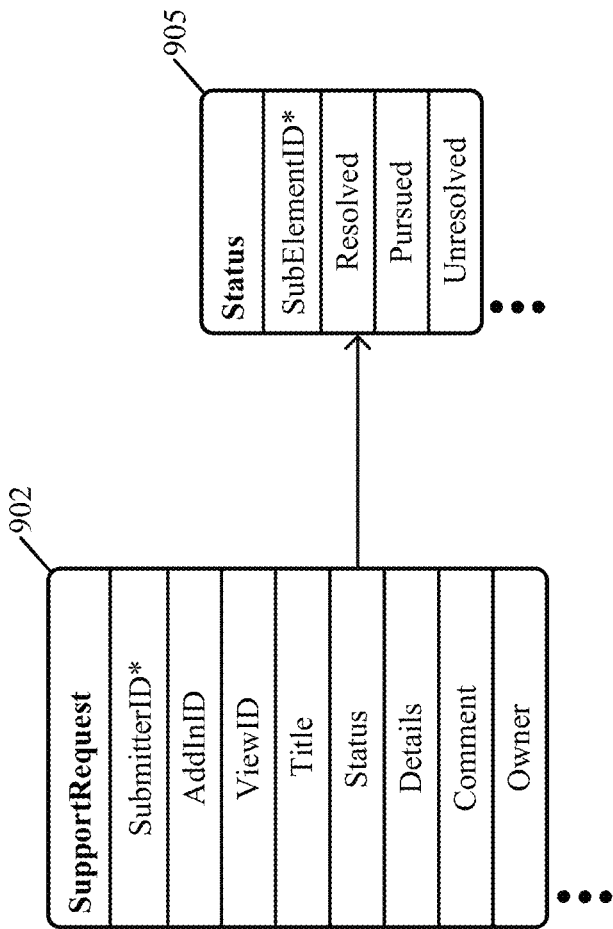


FIG. 9 – Case Submitter Schema

1000

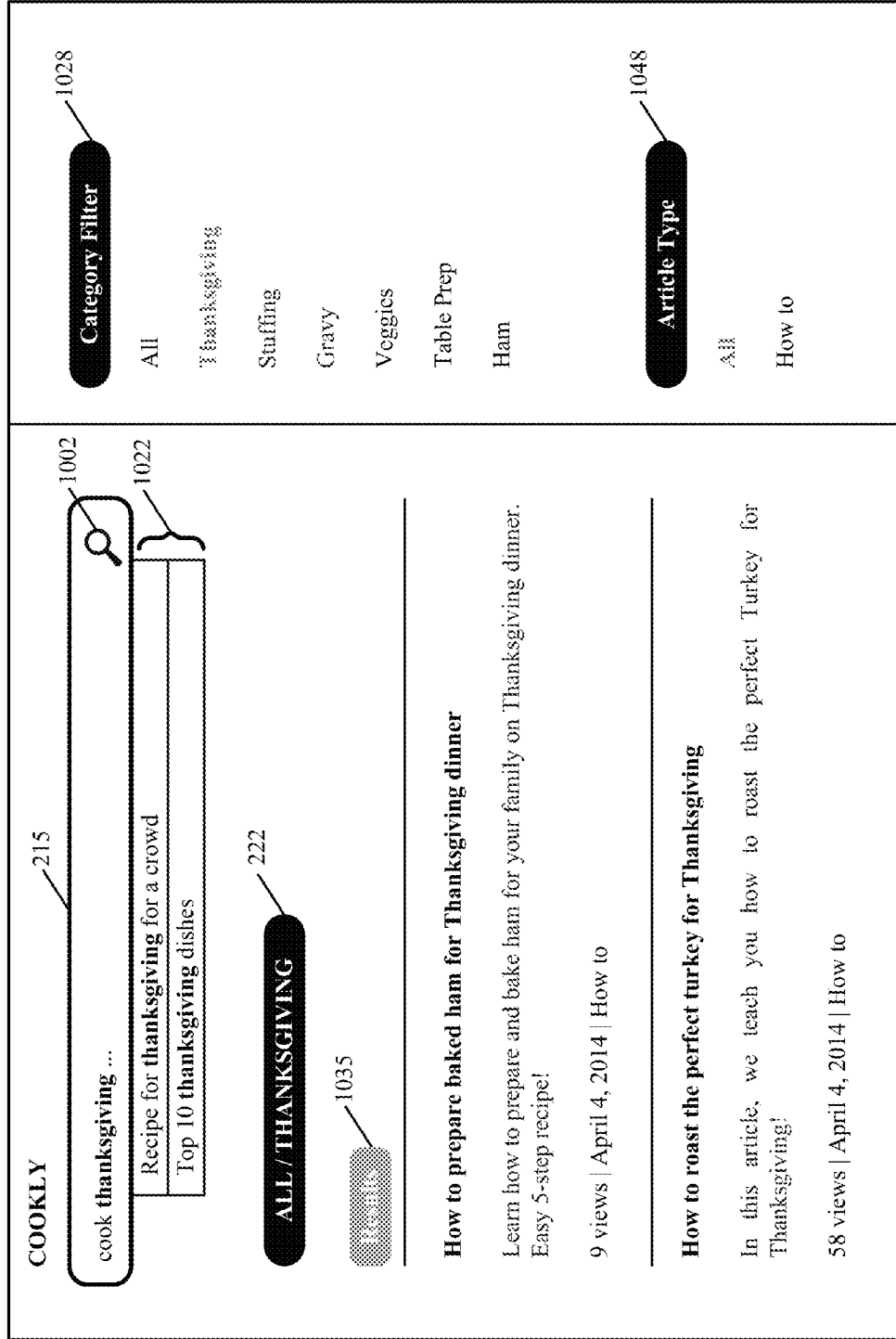
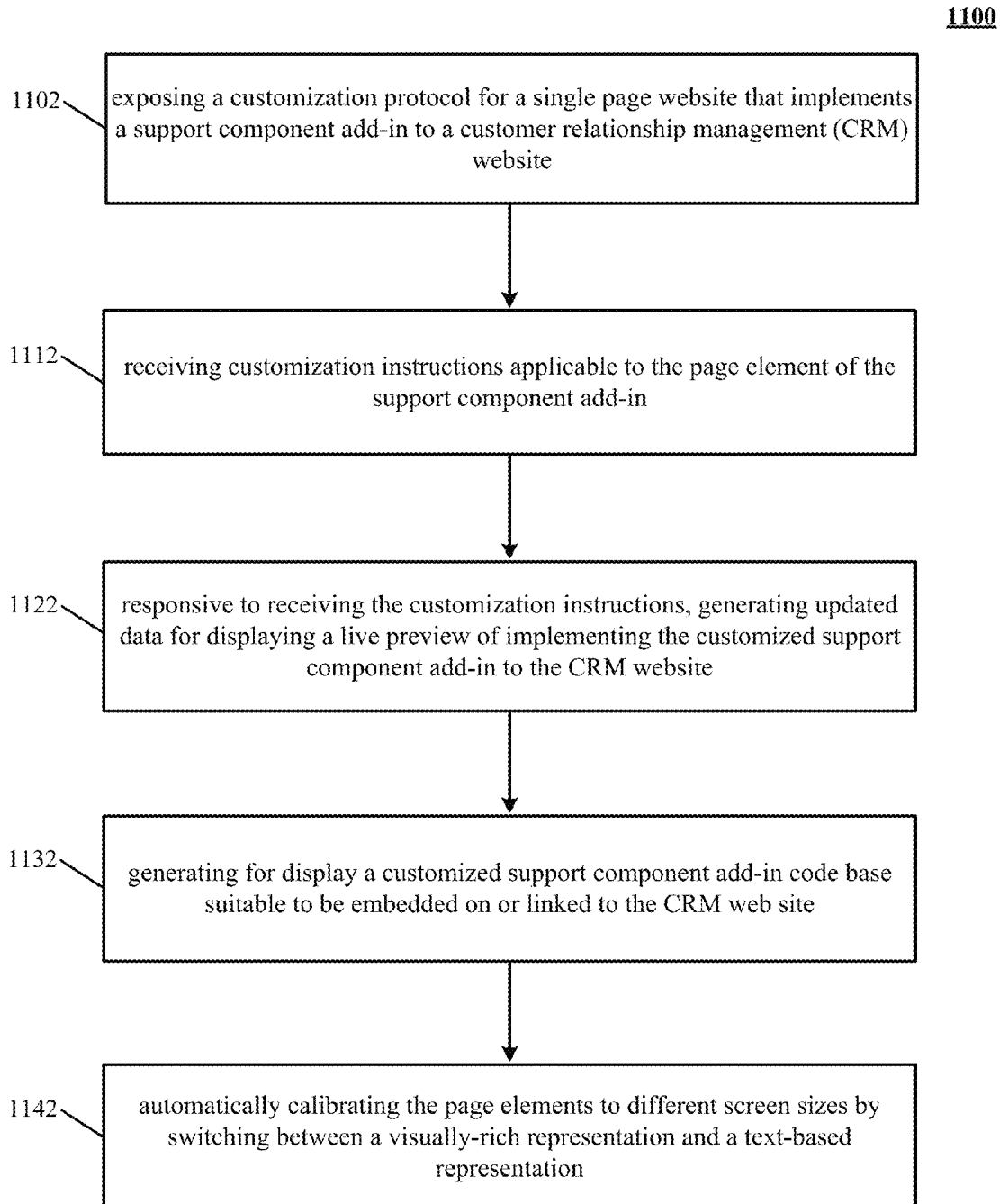


FIG. 10 – Search Box



**FIG. 11 – Simplified Development of a CRM-Integrated Website Support Component**

1200

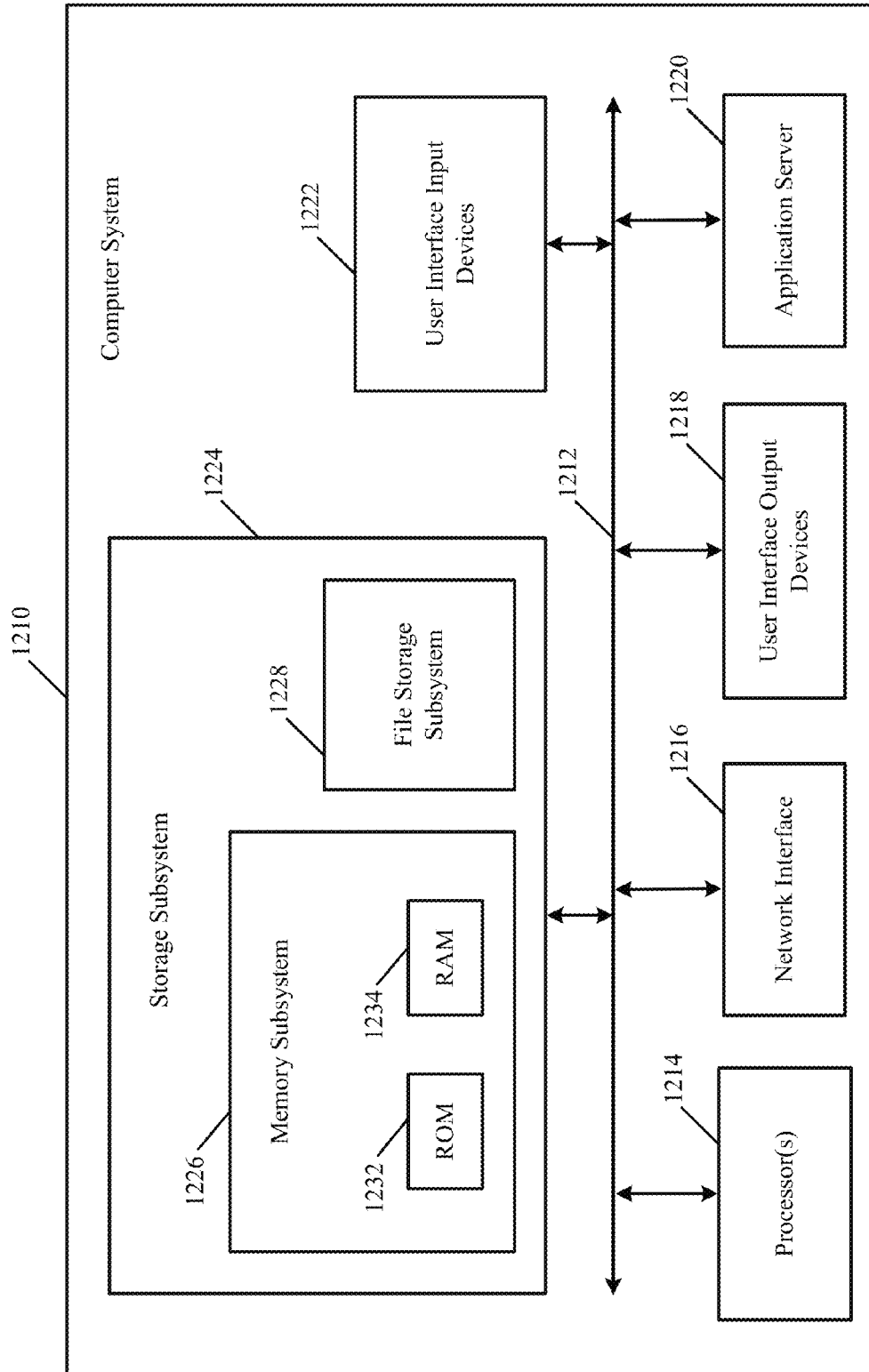


FIG. 12 – Computer System



1

**RESPONSIVE SELF-SERVICE WEBSITE  
TEMPLATE****PRIORITY DATA**

The application claims the benefit of U.S. Provisional Patent Application No. 61/865,284, filed on 13 Aug. 2013 . The provisional application is hereby incorporated by reference for all purposes.

**BACKGROUND**

The subject matter discussed in the background section should not be assumed to be prior art merely as a result of its mention in the background section. Similarly, a problem mentioned in the background section or associated with the subject matter of the background section should not be assumed to have been previously recognized in the prior art. The subject matter in the background section merely represents different approaches, which in and of themselves may also correspond to implementations of the claimed technology.

Creating a website is often a difficult task for non-experts. Individuals who do not have experience with creating websites usually find it difficult to design and publish their own websites. Typically, most business owners do not possess the technical skills required to generate and maintain a website. A great deal of knowledge and effort is required to ensure that the website is professional looking and easy to navigate. Consequently, many individuals and small business turn to professional designers to build their customized websites. The costs associated professional website designers can be substantial.

Automated applications are available in the market that help a user create a website. Although such applications assist a user in developing a website, a considerable amount of judgment and know how, along with the writing of the content, is still required on the part of the user in order to develop a website with these applications.

Also, the mobile revolution has blessed the users with diverse computing devices of various sizes and other form-factors. As a result, multi-screen content delivery faces the challenges of bandwidth and operating system compatibility. Thus, users, especially, non-technical users, face the difficult task of developing websites that can be consistently displayed on different types of devices.

An opportunity arises to easily and efficiently build custom websites that fulfill the specific needs and requirement of the customers and that can be deployed globally across a wide spectrum of user computing devices. Improved customer experience and engagement, higher customer satisfaction and retention, and greater sales may result.

**BRIEF DESCRIPTION OF THE DRAWINGS**

In the drawings, like reference characters generally refer to like parts throughout the different views. Also, the drawings are not necessarily to scale, with an emphasis instead generally being placed upon illustrating the principles of the technology disclosed. In the following description, various implementations of the technology disclosed are described with reference to the following drawings, in which:

FIG. 1 shows an example environment of constructing a responsive self-service CRM website using a support component add-in.

2

FIG. 2 shows a visually rich customization protocol of the support add-in component that presents visitors of the CRM website with support articles organized by data categories.

FIG. 3A shows one implementation of a schema of featured categories page element.

FIG. 3B illustrates one implementation of a collection of support articles.

FIG. 4 depicts one implementation of a text-based customization protocol suitable for mobile devices with small screen sizes.

FIG. 5 shows one implementation of a schema of trending articles page element.

FIG. 6 depicts one implementation of a branding editor that customizes page elements of a support component add-in in response to customer instructions.

FIGS. 7 and 8 show one implementation of a case submitter page element.

FIG. 9 shows one implementation of a schema of a case submitter page element.

FIG. 10 illustrates one implementation of a search view of the support add-in component.

FIG. 11 is a representative method of simplified development of a CRM-integrated website support component add-in.

FIG. 12 is a block diagram of an example computer system used for simplified development of a CRM-integrated website support component add-in.

**DETAILED DESCRIPTION****Introduction**

The technology disclosed allows website developers to quickly and easily build a self-service customer relationship management (CRM) portion of a website, which gives customers visual and functional experience that is specific, customized, and/or responsive to their respective user computing devices, whether they be tablets, mobile devices, or desktops. In one implementation, the visual representation and arrangement of the CRM portion of the website is adaptively displayed on various types of devices that differ with respect to screen sizes and available network bandwidth.

Customers want an easy way to interact with the service providers at their own convenience. Traditionally, a self-service support website gives customers easy access to support articles so that they can help themselves when they have questions. This self-service support website gives customers access to information and articles organized by product categories and contact support agents through official support channels and create and manage their cases. The technology disclosed presents a self-service website customization protocol that extends such a self-service support website to a variety of devices with a user experience that is oriented to the different computational and hardware specifications of a multitude of devices.

The technology disclosed provides a customization protocol for a single-page application that implements a support component add-in to the CRM website. The customization protocol includes a plurality of page elements that can be easily edited by the customers without any coding. A single-page application is a web application that loads a single HTML page. Unlike traditional website, which comprises of several pages that the customer navigates between, a single page application consists of several views that are used to update the page dynamically when the user interacts with it. This single page application has a responsive user interface that automatically scales to different screen sizes, such as

mobile devices, tablets, or desktop browsers, by implementing views calibrated to the active screen.

According to one implementation, the technology disclosed includes a visually rich self-service customization protocol that presents visitors of the CRM website with support articles organized by data categories and allows visitors to submit support requests to get help from support agents. In another implementation, the technology disclosed includes a self-service customization protocol that is calibrated for mobile devices. It lets visitors search for and view articles by text categories, and contact support if they can't find what they're looking for.

In some implementations, the page elements in the self-service customization protocol allow customers to search a public knowledge base for answers to their questions without contacting a support agent, view articles based on data categories, select a specific category and search or browse within a smaller subset of articles, and log in and create a case when they can't find the answer they're looking for.

Examples of systems, apparatus, and methods according to the disclosed implementations are described in a "CRM" context. The example of a CRM website is being provided solely to add context and aid in the understanding of the disclosed implementations. In other instances, examples of support websites related to other industries like energy and utilities, education, agriculture and mining, medical services, etc. may be used. Other applications are possible, such that the following examples should not be taken as definitive or limiting either in scope, context, or setting. It will thus be apparent to one skilled in the art that implementations may be practiced in or outside the "CRM" context.

The described subject matter is implemented by a computer-implemented system, such as a software-based system, a database system, a multi-tenant environment, or the like. Moreover, the described subject matter can be implemented in connection with two or more separate and distance computer-implemented systems that cooperate and communicate with one another. One or more implementations can be implemented in numerous ways, including as a process, an apparatus, a system, a device, a method, a computer readable medium such as a computer readable storage medium containing computer readable instructions or computer program code, or as a computer program product comprising a computer usable medium having a computer readable program code embodied.

As used herein, "customer" refers to an individual or organization that intends to build a website to publicize its business and services. Further, as used herein, "visitor" refers to an end-user that visits a CRM website published by the customer on the Internet using the technology disclosed. In some implementations, a visitor can also be a consumer, account, lead, or prospect that uses or is interested in a product or service offered and publicized by the customer.

As used herein, the "specification" of an item of information does not necessarily require the direct specification of that item of information. Information can be "specified" in a field by simply referring to the actual information through one or more layers of indirection, or by identifying one or more items of different information which are together sufficient to determine the actual item of information. In addition, the term "identify" is used herein to mean the same as "specify."

As used herein, a given signal, event or value is "responsive to" a predecessor signal, event or value of the predecessor signal, event or value influenced by the given signal, event or value. If there is an intervening processing element, step or time period, the given signal, event or value can still be

"responsive to" the predecessor signal, event or value. If the intervening processing element or step combines more than one signal, event or value, the signal output of the processing element or step is considered "responsive to" each of the signal, event or value inputs. If the given signal, event or value is the same as the predecessor signal, event or value, this is merely a degenerate case in which the given signal, event or value is still considered to be "responsive to" or "based on" the predecessor signal, event or value. "Dependency" of a given signal, event or value upon another signal, event or value is defined similarly.

Customization Environment

FIG. 1 shows an example environment 100 of constructing a responsive self-service CRM website using a support component add-in. FIG. 1 includes page elements database 102 and custom instruction database 108. FIG. 1 also shows network(s) 115, add-in generation engine 122, application 126, and user computing device 128. In other implementations, environment 100 may not have the same elements or components as those listed above and/or may have other/different elements or components instead of, or in addition to, those listed above, such as a web server and template database. The different elements or components can be combined into single software modules and multiple software modules can run on the same hardware.

Network(s) 115 is any network or combination of networks of devices that communicate with one another. For example, network(s) 115 can be any one or any combination of a LAN (local area network), WAN (wide area network), telephone network (Public Switched Telephone Network (PSTN), Session Initiation Protocol (SIP), 3G, 4G LTE), wireless network, point-to-point network, star network, token ring network, hub network, WiMAX, WiFi, peer-to-peer connections like Bluetooth, Near Field Communication (NFC), Z-Wave, ZigBee, or other appropriate configuration of data networks, including the Internet. In other implementations, other networks can be used such as an intranet, an extranet, a virtual private network (VPN), a non-TCP/IP based network, any LAN or WAN or the like.

Add-in generation engine 122 can be of varying types including a workstation, server, computing cluster, blade server, server farm, or any other data processing system or computing device. In some implementations, add-in generation engine 122 can be communicably coupled to user computing device 128 via different network connections, such as the Internet or a direct network link.

In some implementations, databases can store information from one or more tenants into tables of a common database image to form an on-demand database service (ODDS), which can be implemented in many ways, such as a multi-tenant database system (MTDS). A database image can include one or more database objects. In other implementations, the databases can be relational database management systems (RDBMSs), object oriented database management systems (OODBMSs), distributed file systems (DFS), no-schema database, or any other data storing systems or computing devices. In some implementations, user computing device 128 can be a personal computer, laptop computer, tablet computer, smartphone, personal digital assistant (PDA), digital image capture devices, and the like.

Application 126 can take one of a number of forms, including user interfaces, dashboard interfaces, engagement consoles, and other interfaces, such as mobile interfaces, tablet interfaces, summary interfaces, or wearable interfaces. In some implementations, it can be hosted on a web-based or cloud-based privacy management application running on a computing device such as a personal computer, laptop com-

5

puter, mobile device, and/or any other hand-held computing device. It can also be hosted on a non-social local application running in an on-premise environment. In one implementation, application 126 can be accessed from a browser running on a computing device. The browser can be Chrome, Internet Explorer, Firefox, Safari, and the like. In other implementations, application 126 can run as an engagement console on a computer desktop application.

Page elements database 102 includes the different pre-programmed page elements of a support component add-in. Examples of page elements database 102 include featured categories, search boxes, case submitters, etc., which are described in greater detailed latter in this application. In one implementation, page elements are stored as computer readable code written in any programming language. Some examples of languages that can be used include C, AJAX, Python, C++, or JAVA. The software programs can be further translated into machine language or virtual machine instructions and stored in a program file in that form. The program file can then be stored on or in one or more of the articles of manufacture, according to other implementations.

In one implementation, customization environment 100 can comprise of a search appliance that accesses search indices on database server. Search indices can provide keyword indices for a support articles database, which includes a collection of support articles later described in this application. According to one implementation, search appliance performs key word searching in search indices to identify articles in support articles database that contain words in search query provided by a featured search page element.

Custom instructions database 108 holds commands provided by the customers. It further updates the corresponding page elements to which the commands relate. For instance, if the customer updates the background color of a particular search box page element, the custom instructions database 108 stores the updated value of the background color attribute of the particular search box page element.

Add-in generation engine 122 produces a support component add-in that can be embedded, integrated, or linked to or as CRM websites. In one implementation, the Add-in generation engine 122 combines the code base for a support component add-in and a code repository of a CRM website based on customer preferences. In another implementation, the add-in generation engine 122 assigns a plurality of placeholders in the code repository of a CRM website and upon receiving code base for a support component add-in, evaluates the code base and automatically inserts suitable portions of the code base in the CRM website's code repository. In some implementations, the evaluation is based on the attributes of the specific placeholders of the CRM website that are to be populated, such as length, width, or content type of the placeholders.

#### Visually Rich Customization Protocol

FIG. 2 shows a visually rich customization protocol 200 of the support add-in component that presents visitors of the CRM website with support articles organized by data categories. In other implementations, the support articles can be classified, stratified, or categorized into folders, tags, topics, or any other visual arrangement based on various criteria such as industry type, products, services, job functions, etc. Visitors can also browse and search the support articles based on the data categories. The self-service customization protocol 200 also provides the ability to access cases and browse categories within the navigation page element. In one implementation, the self-service customization protocol 200 includes a featured search page element 215 and featured data categories page element 222. The page elements 215 and 222

6

require no setup or initialization by the customers and the user is only prompted to specify the number of articles in the featured data categories page element 222 and auto-query suggestions desired in the search queries applied to the featured search page element 215.

As shown in FIG. 2, the customization protocol 200 can be used by the customers to upload the images they will use to represent various data categories on their CRM website and to extend their company's branding, according to one implementation. In the example shown in FIG. 2, if the CRM website has an "all recipes" data category group with categories for "thanksgiving," "seafood," "salads," and so on. To add visual interest, the customization protocol 200 can be used to display images that represent each of the categories in the featured categories page element 222. In some implementations, each category can have at least one image associated with it, which appears in a square frame on the category page or a rectangular frame in the search bar 215. In one implementation, the customers can use the convention <datacategoryname>-<size>, <filetype> to name the image files, so that the correct image file is associated with the data category of the same name. Further, the customers can enter a relative unified resource locator (URL) and use the expression {!Global.PathPrefix}/{!DataCategory.Name}.jpg in an element's "category image URL" field. This expression maps directly to <datacategoryname>-<size> and displays images for the data categories in the order in which they are listed in the data category group.

In another implementation, a "category group name" field of the customization protocol 200 allows customers to provide a unique name of the data category group that contains the data categories for the CRM website. This field reflects the hierarchy of categories that the customers have setup and is used throughout the CRM website to organize support articles. In another implementation, a "top level category" field of the customization protocol 200 allows customers to specify the highest-level category they want to display. In some implementations, the children of this category appear in the CRM website. In other implementations, the customers can set up several nested layers of categories above this category and the CRM website shows this as the parent and its sub-categories as children.

Another implementation includes the featured search page element 215 having a "home view" and "other view." The home view uses the expression {!Site.TopLevelCategory} to search based on the top-level category. The other view uses the expression {!category} to search within the current category. For example, if a customer's company sells internationally, the customer can have a group for "products" and under it categories for Americas, Europe, Asia, and so on. Under each region, the customer can list sub-categories for the products sold in that market. If the customer use Asia as the top-level category, then only product categories listed under Asia appear in the CRM website. In some other implementation, a "company name" field of the add-in component allows customers to designate a name of their company as they want it to appear in the header of the single-page CRM website.

In another implementation, the customers can also configure visitor profiles to specify permissions and define access to the CRM website. Additionally, the customization protocol 200 can be used to create a case assignment rule so that support requests from the CRM website are assigned to support agents.

FIG. 3A shows one implementation of a schema 300A of featured categories page element. This and other data structure descriptions that are expressed in terms of objects can

also be implemented as tables that store multiple records or object types. Reference to objects is for convenience of explanation and not as a limitation on the data structure implementation. FIG. 3A shows featured categories object **302** linked to category object **305**. Category object **305** is further linked to sub-category object **308**. In other implementations, feature category schema **300A** may not have the same objects, tables, fields or entries as those listed above and/or may have other/different objects, tables, fields or entries instead of, or in addition to, those listed above such as a user object, view object, or organization object.

Featured categories object **302** identifies the top-level featured category page element of a particular view of a support component add-in. In the example shown in FIG. 3A, a "PageElementID\*" field uniquely identifies a feature category page element, such as "ALL" **222** shown in FIG. 2. Also, an "AddInID" field specifies the support component add-in that is hosting the feature category page element identified by the "PageElementID\*" field. Further, a "ViewID" field refers to the view that is loaded to present the feature category page element to the visitors of the CRM website that uses the support component add-in identified by the "AddInID" field.

Category object **305** reflects at least one of the many sub-categories in the featured page element page element specified by the "PageElementID\*" field. It can also include fields to store the images associated with the category along with a URL that can be used to access the category. It can further identify the different sub-categories that come under the category. Such sub-categories can be stored in the sub-category object **308**, which identifies the particular sub-category using the field "SubCategoryID\*" and can also include an image and URL field.

In yet another implementation, schema **300A** can have one or more of the following variables with certain attributes: USER\_ID being CHAR (15 BYTE), IMAGES\_ID being CHAR (15 BYTE), VIEW\_ID being CHAR (15 BYTE), COMPONENT\_ID being CHAR (15 BYTE), WEBSITE ID being CHAR (15 BYTE), LINK\_ID being CHAR (15 BYTE), CREATED\_BY being CHAR (15 BYTE), CREATED\_DATE being DATE, and DELETED being CHAR (1 BYTE).

#### Support Article

FIG. 3B illustrates one implementation of a collection **300B** of support articles, which can be in the form of text, audio, video, or audio and video. Support article (SA) **312** is a data container or data structure, to provide metadata storage for one or more support article versions (SAV) **322**. SAV **312** is a document that has a distinct version among all other SAVs within SA **312**. SA **312** can be stored separate from its children SAVs **322**. However, SA **312** can include pointers to its children SAVs **322** that can be stored separate from SA **312**.

In one implementation, support articles (SA) are categorized by data categories. Data categories can be defined in data category groups, each group being a hierarchy of data categories. In some implementations, access to the SAs can be controlled based on roles of the users. For instance, certain data categories of SAs can be restricted to support agents for viewing and editing, whereas some data categories of SAs can be made available public to all users. A SA is assigned a data category to best reflect the content of the SA. A typical data category group can include one or more of the name of a product, level of access, and a topic. The level of access includes whether a SA in a data category group is restricted to some type of customers. The topic attribute can include information about the primary objectives of the SA. For example whether the SA is about how to use the product, how to buy the product, how to cancel subscription of a product, etc.

A SA can be categorized under more than one data category group. For example, if the subject matter of the SA span across multiple products, the SA can be categorized under several data category groups, each including a different product. Appropriate search filters can be provided to enable efficient searches by data category groups. For example, a search can be performed for all SAs within a selected data category group, or all SAs within a selected data category group and a selected topic, etc.

A SA type refers to a specific format for the SA. In one implementation, various templates can be provided to enable customers to create new SAs. For example, if a user wishes to create a SA of type "frequently asked questions" (FAQ), a pre-built template can be used. The pre-built template can include fields such as a "Question" field and an "Answer" field. Similarly, a template for creating a new SA regarding product descriptions can include fields such as Picture, Short Description, Long Description, User Manual, etc. These templates can be customized to conform to specific customer requirements. In one implementation, customers with appropriate authorization can create new SA type templates.

#### Text-Based Customization Protocol

FIG. 4 depicts one implementation of a text-based customization protocol **400** suitable for mobile devices with small screen sizes. In the example shown in FIG. 4, the featured categories page elements are not visually represented by images as in the visually rich customization protocol **300A** of FIG. 3A. In some implementations, when a visitor accesses the CRM website from a mobile device, the text-based customization protocol **400** is automatically used for the all or a combination of the page elements, featured search page element **215** and case submitter **800**. In addition, such a text-based customization protocol **400** can overcome bandwidth limitations of networks **115** by preventing network congestion that is sometimes caused by information packets carrying data related to multi-media, including images, videos, and the like.

FIG. 4 also illustrates a trending articles page element **432**, which presents to the visitor articles that both match the query criteria entered by the visitor in the featured search page element **215** and are most popular on different social networking platforms such as Facebook®, Twitter®, and LinkedIn®. In one implementation, the popularity of an article is determined by the number of re-tweets, likes, shares, visits, or posts. In yet another implementation, the trending articles are selected based on the current data category a visitor is viewing on the CRM website and the number of times a particular article has been recently viewed within a pre-determined window of time. For example, if a visitor is the "Thanksgiving" data category and a specific article about "how to make a turkey?" (qualifying as to fall within the "Thanksgiving" data category) has been viewed n number of times in the last x minutes such that n and x exceed pre-designated thresholds for viewership and recency, the specific article is presented to the visitor as a trending article.

FIG. 5 shows one implementation of a schema **500** of trending articles page element. This and other data structure descriptions that are expressed in terms of objects can also be implemented as tables that store multiple records or object types. Reference to objects is for convenience of explanation and not as a limitation on the data structure implementation. FIG. 5 shows trending articles object **502** linked to category object **305**. Category object **505** is further linked to article object **508**. In other implementations, trending articles schema **500** may not have the same objects, tables, fields or entries as those listed above and/or may have other/different objects, tables, fields or entries instead of, or in addition to,

those listed above such as a user object, API interface object, or social networking platform object.

Trending articles object **502** identifies the top-level featured category page element of a particular view of a support component add-in. In the example shown in FIG. 5, a “PageElementID\*” field uniquely identifies a feature category page element, such as “TRENDING” **432** shown in FIG. 4. Also, an “AddInID” field specifies the support component add-in that is hosting the feature category page element specified by the “PageElementID\*” field. Further, a “ViewID” field refers to the view that is loaded to present the feature category page element to the visitors of the CRM website that uses the support component add-in identified by the “AddInID” field.

Category object **505** reflects at least one of the many sub-categories in the featured page element page element specified by the “PageElementID\*” field. It can also include fields to specify the different trending articles associated with the category. Such trending articles can be stored in the article object **508**, which identifies the particular trending article using the field “ArticleID\*” and specifies the social networking platform on which the article identified by the field “ArticleID\*” is trending, along with a URL that can be used to access the article.

In yet another implementation, schema **500** can have one or more of the following variables with certain attributes: USER\_ID being CHAR (15 BYTE), PLATFORM\_ID being CHAR (15 BYTE), VIEW\_ID being CHAR (15 BYTE), COMPONENT\_ID being CHAR (15 BYTE), WEBSITE\_ID being CHAR (15 BYTE), LINK\_ID being CHAR (15 BYTE), CREATED\_BY being CHAR (15 BYTE), CREATED\_DATE being DATE, and DELETED being CHAR (1 BYTE).

#### Branding Editor

FIG. 6 depicts one implementation of a branding editor **600** that customizes page elements of a support component add-in in response to customer instructions. According to one implementation, a branding editor **600** of the CRM website provides a flexible way for the customers to define different aspects of their self-service CRM website’s brand. By customizing their CRM website’s branding properties, the customers can easily define and change different aspects of their CRM website’s appearance. In some implementations, the customers can reference branding properties in style sheets to let their support team quickly update the CRM website’s appearance using the branding editor. Some examples of the branding properties include link font color, button background and font color, font family, font size, and font color, header background color, font family, font size, and font color, and component background color. In another implementation, the branding editor includes two areas, one called an “editor palette” **602** that contains all of the branding properties that customers can edit and another called the “preview area,” which shows a live preview of how the CRM website will appear after a particular branding property or style is updated.

#### Case Submitter

FIGS. 7 and 8 show one implementation of a case submitter page element **800**. Customization protocol **200** can include a support page element **732** that allows visitors of the CRM website to submit support requests in order to obtain assistance from customer service or support agents using button **742**. When a visitor selects the “contact support” button **742**, a case submitter page element **800** is loaded to as the current view of the CRM website to receive visitor feedback regarding the support request. Case submitter page element **800** includes a plurality of sub-elements such as case highlights

**802**, case status pane **808**, case publisher **812**, case details **828**, case comments **832**, and case attachments **838**. Case highlights strip **802** provide a single-line summary for the visitor, which includes three distinct features. In this example, the case highlights tell the visitor that the inquiry requires a “medium” level of expertise, the case itself is a new case, and the case number is 00001053. The case status pane **808** in this example reads “resolve case,” which allows the visitor to communicate to a service agent that an issue, previously raised by the visitor, no longer needs the service agent’s agent or assistance. Case publisher **812** enables the visitor to specify label text for the title and the submit button. The customer can also optionally change the placeholder text for the publisher pane **812** and choose not to allow the visitors to attach any files, according to some implementations. Case details window **828** provide the visitor with the name of the case owner “Jon Amos”, the case number “00001053,” and the contact name “Luke Dime.” Case comments **832** allow the visitors to enter text which can include a description of the problem or issue sought to be resolved. Case attachments tool **838** enables the visitor to upload an attachment of the problem. The attachment can include a number of file formats such as “img,” “jpeg,” “bit,” “pdf,” “docx,” “xls,” etc., depending on the nature of the file uploaded. For example, in some cases the visitor may wish to include a picture or video of their problem or issue along with location information from the device being used to make the support request that identifies the location of the problem or issue. In other cases, the visitor may wish to provide the agent with supporting documents or written descriptions of the issues they are facing. In yet other aspects, sensor and/or biometric data such as heart rate values, blood pressure values, UV dose obtained, temperature, or humidity collected using a wearable computing device (Google Glass®, Fitbit Tracker®, Leap Motion Controller®) or other sensor can be uploaded.

FIG. 9 shows one implementation of a schema **900** of a case submitter page element. This and other data structure descriptions that are expressed in terms of objects can also be implemented as tables that store multiple records or object types. Reference to objects is for convenience of explanation and not as a limitation on the data structure implementation. FIG. 9 shows support request object **902** linked to status object **905**. In other implementations, case submitter schema **900** may not have the same objects, tables, fields or entries as those listed above and/or may have other/different objects, tables, fields or entries instead of, or in addition to, those listed above such as a highlights object, comment object, or details object.

Support request object **902** identifies a support request made by a visitor of a CRM website. In the example shown in FIG. 9, a “SubmitterID\*” field uniquely identifies a case submitter page element used to generate the support request, such as case submitter **800** shown in FIG. 8. Also, an “AddInID” field specifies the support component add-in that is hosting the case submitter page element identified by the “SubmitterID\*” field. Further, a “ViewID” field refers to the view that is loaded to present the case submitter page element to the visitors of the CRM website that uses the support component add-in identified by the “AddInID” field.

Status object **905** reflects a status of the support request. In other implementations, other sub-elements of a case submitter page element such as case highlights, case comments, case owner, case contact, case attachments, or case title can be linked to the support request object **902** as objects of schema **900**.

In yet another implementation, schema **900** can have one or more of the following variables with certain attributes: USE-

11

R\_ID being CHAR (15 BYTE), HIGHLIGHTS\_ID being CHAR (15 BYTE), VIEW\_ID being CHAR (15 BYTE),

COMPONENT\_ID being CHAR (15 BYTE), WEBSITE\_ID being CHAR (15 BYTE), TITLE\_ID being CHAR (15 BYTE), CREATED\_BY being CHAR (15 BYTE), CREATED\_DATE being DATE, and DELETED being CHAR (1 BYTE).

Search View

FIG. 10 illustrates one implementation of a search view 1000 of the support add-in component. Search view 1000 includes the search box 215, featured data categories page element 222, results pane 1035, category filter 1028, and article type filter 1048, according to one implementation. In FIG. 10, the results pane 1035 displays the results returned in response to a search criteria entered by a visitor of the CRM website in the search box 215. Category filter 1028 allows the visitor to filter the search results according to a particular category. In the example shown in FIG. 10, holidays are used to filter the search results. The visitor has chosen “Thanksgiving” as the filter and therefore only the results associated with “Thanksgiving,” such as “how to roast a perfect turkey for Thanksgiving,” are returned to the visitor. Article type filter 1048 enables the visitors to choose the type of articles they would like to receive in response to the search criteria entered in the search box 215. For instance, the visitors can select to view only “how to” articles as opposed to all the articles retrieved based on the entered search criteria.

In other implementations, the search box 215 also generates, in real-time or near real-time, auto-query suggestions 1022 desired in the search box 215 based on a query primitive entered by a visitor of the CRM website. When the visitor types in the search box 215, certain articles and search strings are returned based on matches with the characters being typed in the search box 215 before the visitor clicks the search button 1002. This kind of incremental search, referred to as “type-ahead,” gives the visitor immediate results and helps the visitor find the most relevant articles or popular search terms as they type the search string. The user can use the Tab or Arrow keys to display the first suggestion or select on any of the returned results to view that article, according to one implementation. In the example shown in FIG. 10, upon entering a query primitive, i.e. a portion of the query, related to “thanksgiving,” the visitor is presented with article suggestions related to thanksgiving.

Flowchart of Simplified Development of a Support Component Add-In

FIG. 11 is a representative method 1100 of simplified development of a CRM-integrated website support component add-in. Flowchart 1000 can be implemented at least partially with a database system, e.g., by one or more processors configured to receive or retrieve information, process the information, store results, and transmit the results. Other implementations may perform the actions in different orders and/or with different, varying, alternative, modified, fewer or additional actions than those illustrated in FIG. 11. Multiple actions can be combined in some implementations. For convenience, this flowchart is described with reference to the system that carries out a method. The system is not necessarily part of the method.

At action 1102, a customization protocol for a single-page application is exposed to web developers or customers who wish to build a CRM website. In one implementation, the customization protocol implements a support component add-in to a CRM website that includes at least one page element preprogrammed to at least search support articles hosted by the CRM web site, display visual representations of

12

featured categories of articles available within the CRM website, and contact support for the CRM website.

At action 1112, customization instructions applicable to the page element of the support component add-in are received from the customer. In one implementation, the customization instructions are in the form drag and drop actions performed by the customer that add the page element to the customized support component add-in. In some implementations, the customization instructions are in the form of traditional touch inputs, vocal commands, gestural commands, or optical commands.

In one implementation, when the page element is a branding editor, the customization instructions applicable to the branding editor specify branding properties of the CRM website. In some implementations, the branding properties of the CRM website include at least one of font color of links within the CRM website, background and font color of buttons within the CRM website, font family, font size, and font color of text within the CRM website, background, font family, font size, and font color of headers within the CRM website, background, font family, font size, and font color of footers within the CRM website, and background color of the page elements.

In another implementation, when the page element is a search box, the customization instructions applicable to the search box specify at least one of a number of support articles within in the CRM website, placeholder text for the search box, and auto-query suggestions to return.

In yet another implementation, when the page element is a featured category, the customization instructions applicable to the featured category specify at least one of one or more data categories for grouping the support articles within the CRM website, a library of images and linking of the images to the data categories, and titles for the data categories.

In a further implementation, when the page element is a case submitter, the customization instructions applicable to the case submitter specify fields for generating a support request. In some implementations, the fields of the case submitter include at least one of highlights of the support request, status of the support request, details of the support request, attachments related to the support request, owner of the support request, contact for the support request, comments on the support request, and title of the support request.

At action 1122, in response to receiving the customization instructions, updated data is generated to display a live preview of implementing the customized support component add-in to the CRM website. In one implementation, the branding editor 600 includes a preview area that shows a live preview of how the CRM website will appear after a particular branding property or style is updated by the customer.

At action 1132, a customized support component add-in code base is generated for display, which is suitable to be embedded on or linked to the CRM web site. In one implementation, the customer can select, using a graphical user interface (GUI) or a special selection tool, which add-in code base to include in the CRM website.

At action 1142, the page element automatically calibrates to different screen sizes by selecting between a visually-rich representation, such as customization protocol 200, and a text-based representation like customization protocol 400, responsive to a screen size of a current device used to access the CRM website. For instance, if the CRM website is being accessed by a desktop, then the visually rich customization protocol 200 is used to present the different views of the CRM website to the visitors. In contrast, if the CRM website is accessed from a mobile device with smaller screen size, the text-based customization profile 400 is used to generate the

various views of the CRM website. Because the text-based customization profile **400** does not contain images and thus requires a smaller content and graphics canvas, more suitable for smaller screen sizes.

This method and other implementations of the technology disclosed can include one or more of the following features and/or features described in connection with additional methods disclosed. In the interest of conciseness, the combinations of features disclosed in this application are not individually enumerated and are not repeated with each base set of features. The reader will understand how features identified in this section can readily be combined with sets of base features identified as implementations in sections of this application such as customization environment, visually rich customization protocol, text-based customization protocol, branding editor, case submitter, search view, etc.

Other implementations can include a non-transitory computer readable storage medium storing instructions executable by a processor to perform any of the methods described above. Yet another implementation can include a system including memory and one or more processors operable to execute instructions, stored in the memory, to perform any of the methods described above.

#### Computer System

FIG. **12** is a block diagram of an example computer system **1200** used for simplified development of a CRM-integrated website support component add-in. Computer system **1210** typically includes at least one processor **1214** that communicates with a number of peripheral devices via bus subsystem **1212**. These peripheral devices can include a storage subsystem **1224** including, for example, memory devices and a file storage subsystem, user interface input devices **1222**, user interface output devices **1218**, and a network interface subsystem **1216**. The input and output devices allow user interaction with computer system **1210**. Network interface subsystem **1216** provides an interface to outside networks, including an interface to corresponding interface devices in other computer systems.

User interface input devices **1222** can include a keyboard; pointing devices such as a mouse, trackball, touchpad, or graphics tablet; a scanner; a touch screen incorporated into the display; audio input devices such as voice recognition systems and microphones; and other types of input devices. In general, use of the term “input device” is intended to include all possible types of devices and ways to input information into computer system **1210**.

User interface output devices **1218** can include a display subsystem, a printer, a fax machine, or non-visual displays such as audio output devices. The display subsystem can include a cathode ray tube (CRT), a flat-panel device such as a liquid crystal display (LCD), a projection device, or some other mechanism for creating a visible image. The display subsystem can also provide a non-visual display such as audio output devices. In general, use of the term “output device” is intended to include all possible types of devices and ways to output information from computer system **1210** to the user or to another machine or computer system.

Storage subsystem **1224** stores programming and data constructs that provide the functionality of some or all of the modules and methods described herein. These software modules are generally executed by processor **1214** alone or in combination with other processors.

Memory **1226** used in the storage subsystem can include a number of memories including a main random access memory (RAM) **1230** for storage of instructions and data during program execution and a read only memory (ROM) **1232** in which fixed instructions are stored. A file storage

subsystem **1228** can provide persistent storage for program and data files, and can include a hard disk drive, a floppy disk drive along with associated removable media, a CD-ROM drive, an optical drive, or removable media cartridges. The modules implementing the functionality of certain implementations can be stored by file storage subsystem **1228** in the storage subsystem **1224**, or in other machines accessible by the processor.

Bus subsystem **1212** provides a mechanism for letting the various components and subsystems of computer system **1210** communicate with each other as intended. Although bus subsystem **1212** is shown schematically as a single bus, alternative implementations of the bus subsystem can use multiple busses. Application server **1220** can be a framework that allows the applications of computer system **1200** to run, such as the hardware and/or software, e.g., the operating system.

Computer system **1210** can be of varying types including a workstation, server, computing cluster, blade server, server farm, or any other data processing system or computing device. Due to the ever-changing nature of computers and networks, the description of computer system **1210** depicted in FIG. **12** is intended only as one example. Many other configurations of computer system **1210** are possible having more or fewer components than the computer system depicted in FIG. **12**.

The terms and expressions employed herein are used as terms and expressions of description and not of limitation, and there is no intention, in the use of such terms and expressions, of excluding any equivalents of the features shown and described or portions thereof. In addition, having described certain implementations of the technology disclosed, it will be apparent to those of ordinary skill in the art that other implementations incorporating the concepts disclosed herein can be used without departing from the spirit and scope of the technology disclosed. Accordingly, the described implementations are to be considered in all respects as only illustrative and not restrictive.

#### Particular Implementations

In one implementation, we disclose a method of simplified development of a CRM-integrated website support component. The method includes exposing a customization protocol for a single page website that implements a support component add-in to a customer relationship management (CRM) website, the support component add-in including at least one page element preprogrammed to: search support articles hosted by the CRM web site, display visual representations of featured categories of articles available within the CRM website, and contact support for the CRM website. The method also includes receiving customization instructions applicable to the page element of the support component add-in, and generating for display a customized support component add-in code base suitable to be embedded on or linked to the CRM web site.

This method and other implementations of the technology disclosed can include one or more of the following features and/or features described in connection with additional methods disclosed. In the interest of conciseness, the combinations of features disclosed in this application are not individually enumerated and are not repeated with each base set of features. The reader will understand how features identified in this section can readily be combined with sets of base features identified as implementations.

Practicing the method, the page element can include a branding editor and the customization instructions applicable to the branding editor can specify branding properties of the CRM website. These branding properties of the CRM website include at least one of: font color of links within the CRM

15

website, background and font color of buttons within the CRM website, font family, font size, and font color of text within the CRM website, background, font family, font size, and font color of headers within the CRM website, background, font family, font size, and font color of footers within the CRM website, and background color of the page elements.

The page element can include a search box and the customization instructions applicable to the search box specify at least one of: a number of support articles within in the CRM website, placeholder text for the search box, and auto-query suggestions to return.

The page element can be a featured category and the customization instructions applicable to the featured category specify at least one of: one or more data categories for grouping the support articles within the CRM website, a library of images and linking of the images to the data categories, and titles for the data categories.

The page element can be a case submitter and the customization instructions applicable to the case submitter specify fields for generating a support request. The fields of the case submitter can include at least one of: highlights of the support request, status of the support request, details of the support request, attachments related to the support request, owner of the support request, contact for the support request, comments on the support request, and title of the support request.

The method can further include, responsive to receiving the customization instructions, generating updated data for displaying a live preview of implementing the customized support component add-in to the CRM website.

The method can further include adding the page element to the customized support component add-in by a drag and drop action.

The page element can automatically calibrate to different screen sizes by selecting between a visually-rich representation and a text-based representation responsive to a screen size of a current device used to access the CRM website.

Other implementations may include a non-transitory computer readable storage medium storing instructions executable by a processor to perform any of the methods described above. Yet another implementation may include a system including memory and one or more processors operable to execute instructions, stored in the memory, to perform any of the methods described above.

While the present technology is disclosed by reference to the preferred implementations and examples detailed above, it is to be understood that these examples are intended in an illustrative rather than in a limiting sense. It is contemplated that modifications and combinations will readily occur to those skilled in the art, which modifications and combinations will be within the spirit of the technology and the scope of the following claims.

What is claimed is:

1. A method of development of a customer relationship management (CRM)-integrated website visitor facing component, the method including:

exposing a customization protocol to a website developer that implements a visitor facing component add-in to a customer relationship management (CRM) website, the visitor facing component add-in including at least one page element preprogrammed to:  
search support articles that are added to the CRM website;  
display visual representations of featured categories of the support articles; and  
contact support for the CRM website;

16

receiving customization instructions from the website developer applicable to the page element of the visitor facing component add-in;

responsive to receiving the customization instructions, generating data for display of a live preview of a customized visitor facing component add-in to the CRM website; and

generating a customized visitor facing component add-in code base that is suitable to be embedded on or linked to the CRM website, whereby a website visitor can interact with the visitor facing component add-in.

2. The method of claim 1, wherein the page element is a branding editor and the customization instructions applicable to the branding editor specify branding properties of the CRM website.

3. The method of claim 2, wherein the branding properties of the CRM website include at least one of:

font color of links within the CRM website;  
background and font color of buttons within the CRM website;  
font family, font size, and font color of text within the CRM website;  
background, font family, font size, and font color of headers within the CRM website;  
background, font family, font size, and font color of footers within the CRM website; and  
background color of the page elements.

4. The method of claim 1, wherein the page element is a search box and the customization instructions applicable to the search box specify at least one of:

a number of support articles within in the CRM website;  
placeholder text for the search box; and  
auto-query suggestions to return.

5. The method of claim 1, wherein the page element is a featured category and the customization instructions applicable to the featured category specify at least one of:

one or more data categories for grouping the support articles within the CRM website;  
a library of images and linking of the images to the data categories; and  
titles for the data categories.

6. The method of claim 1, wherein the page element is a case submitter and the customization instructions applicable to the case submitter specify fields for generating a support request.

7. The method of claim 6, wherein the fields of the case submitter include at least one of:

highlights of the support request;  
status of the support request;  
details of the support request;  
attachments related to the support request;  
owner of the support request;  
contact for the support request;  
comments on the support request; and  
title of the support request.

8. The method of claim 1, further including adding the page element to the customized visitor facing component add-in by a drag and drop action.

9. The method of claim 1, wherein the page element automatically calibrates to different screen sizes by selecting between a visually-rich representation and a text-based representation responsive to a screen size of a current device used to access the CRM website.

10. A system of development of a customer relationship management (CRM)-integrated website visitor facing component, the system including:



17

a processor and a computer readable storage medium storing computer instructions configured to cause the processor to:

expose a customization protocol to a website developer that implements a visitor facing component add-in to a customer relationship management (CRM) website, the visitor facing component add-in including at least one page element preprogrammed to:

search support articles that are added to the CRM website;

display visual representations of featured categories of the support articles; and

contact support for the CRM website;

receive customization instructions from the website developer applicable to the page element of the visitor facing component add-in;

responsive to receiving the customization instructions, generating data for display of a live preview of a customized visitor facing component add-in to the CRM website; and

generate a customized visitor facing component add-in code base that is suitable to be embedded on or linked to the CRM website, whereby a website visitor can interact with the visitor facing component add-in.

**11.** The system of claim **10**, wherein the page element is a branding editor and the customization instructions applicable to the branding editor specify branding properties of the CRM website.

**12.** The system of claim **11**, wherein the branding properties of the CRM website include at least one of:

font color of links within the CRM website;

background and font color of buttons within the CRM website;

font family, font size, and font color of text within the CRM website;

background, font family, font size, and font color of headers within the CRM website;

background, font family, font size, and font color of footers within the CRM website; and

background color of the page elements.

18

**13.** The system of claim **10**, wherein the page element is a search box and the customization instructions applicable to the search box specify at least one of:

a number of support articles within in the CRM website;

placeholder text for the search box; and

auto-query suggestions to return.

**14.** The system of claim **10**, wherein the page element is a featured category and the customization instructions applicable to the featured category specify at least one of:

one or more data categories for grouping the support articles within the CRM website;

a library of images and linking of the images to the data categories; and

titles for the data categories.

**15.** The system of claim **10**, wherein the page element is a case submitter and the customization instructions applicable to the case submitter specify fields to generate a support request.

**16.** The system of claim **15**, wherein the fields of the case submitter include at least one of:

highlights of the support request;

status of the support request;

details of the support request;

attachments related to the support request;

owner of the support request;

contact for the support request;

comments on the support request; and

title of the support request.

**17.** The system of claim **10**, further configured to add the page element to the customized visitor facing component by a drag and drop action.

**18.** The system of claim **10**, wherein the page element automatically calibrates to different screen sizes by selecting between a visually-rich representation and a text-based representation responsive to a screen size of a current device used to access the CRM website.

\* \* \* \* \*